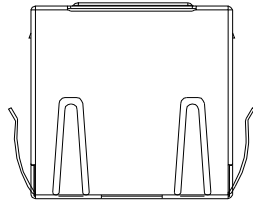


REACH & RoHS
COMPLIANT

| REV. | ECN / DESCRIPTION | BY | DATE |
|------|-------------------|-------|------------|
| A0 | NEW | MQ.QU | 2017.10.16 |



TOP VIEW

MATERIAL:

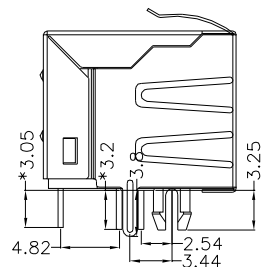
HOUSING: PBT,UL94V-0, BLACK.
TERMINAL: PHOSPHOR BRONZE $\phi=0.46\text{MM}$, G/FU" GOLD PLATING.
SHIELD: C2680,T=0.20MM,20U" MIN NICKEL PLATING ON ALL AREA.

MACHANICAL:

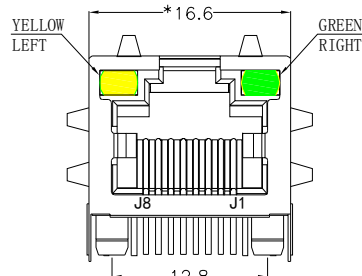
DURABILITY: 750 CYCLES MIN,12.5MM/MINUTE.
INSERTION FORCE: 2.2KG.F MAX.
RETENTION STRENGTH : 7.7KG.F BETWEEN JACK AND PLUG .
OPERATING TEMPERATURE: $-40^{\circ}\text{C}\sim+85^{\circ}\text{C}$.
STORAGE TEMPERATURE: $-40^{\circ}\text{C}\sim+85^{\circ}\text{C}$.
ALL CRITICAL DIMENSIONS WITH "*"

ELECTRICAL:

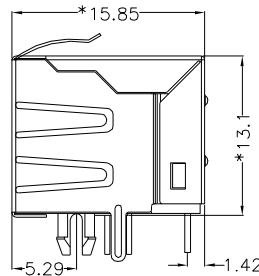
VOLTAGE: 125 VOLTS AC.
CURRENT RATING : 1.5AMP.
DIELECTRIC STRENGTH : 1000 VAC RMS 50HZ OR 60HZ,1 MIN.
INSULATION RESISTANCE: 500 MEGA OHMS MIN. INITIAL
AFTER 500V DC FOR 1 MINUTE.
CONTACT RESISTANCE: SINGLE TERMINAL 30 MILLIOHMS MAX.
INITIAL 50 MILLIOHMS MAX. AFTER DURABILITY TEST.



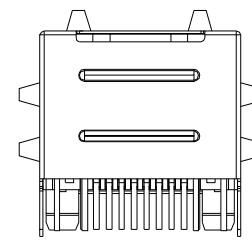
LEFT SIDE VIEW



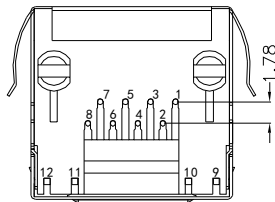
FRONT VIEW



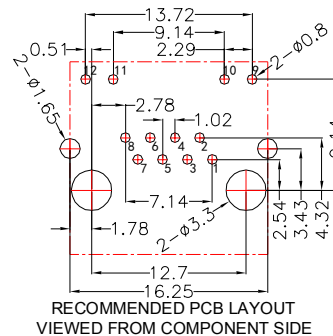
RIGHT SIDE VIEW



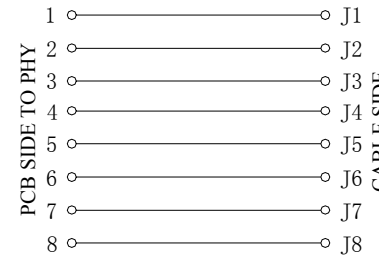
BACK VIEW



BOTTOM VIEW

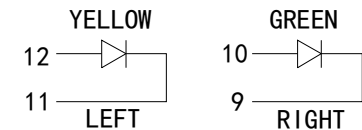


RECOMMENDED PCB LAYOUT
VIEWED FROM COMPONENT SIDE



LED Specification

| Standard LED Color | LED Wavelength | Foward(A) | Foward(V) |
|--------------------|----------------|-----------|-----------|
| Green | 568nm | 20mA | 1.8-2.8V |
| Yellow | 585nm | 20mA | 1.8-2.8V |



DIMUD

| | | | | | |
|----------------------------------|--------------|-------------------|--|-------------------------------|-------------------------|
| TITLE: RJ45直通 56带屏蔽带灯 | SIZE A4 | UNITS MM[INCH] | GENERAL TOLERANCES UNLESS SPECIFIED | | APPROVED BY: JP.Gong |
| PART NO.: DIMUD561188DB1A1DY1 | SACLE 1:1 | REV A0 | $x\pm 0.35$ | $x^{\circ}\pm 3.0^{\circ}$ | CHECKED BY: TW.Xu |
| REMARK: | SHEET 1/1 | | $.xx\pm 0.25$ | $.xx^{\circ}\pm 1.5^{\circ}$ | DESIGND BY: MQ.Qu |
| | | | $.xxx\pm 0.10$ | $.xxx^{\circ}\pm 1.0^{\circ}$ | |